



# Wasp Watchers

ENGAGING VOLUNTEERS AND NATIVE, HARMLESS WASPS TO FIND EMERALD ASH BORER

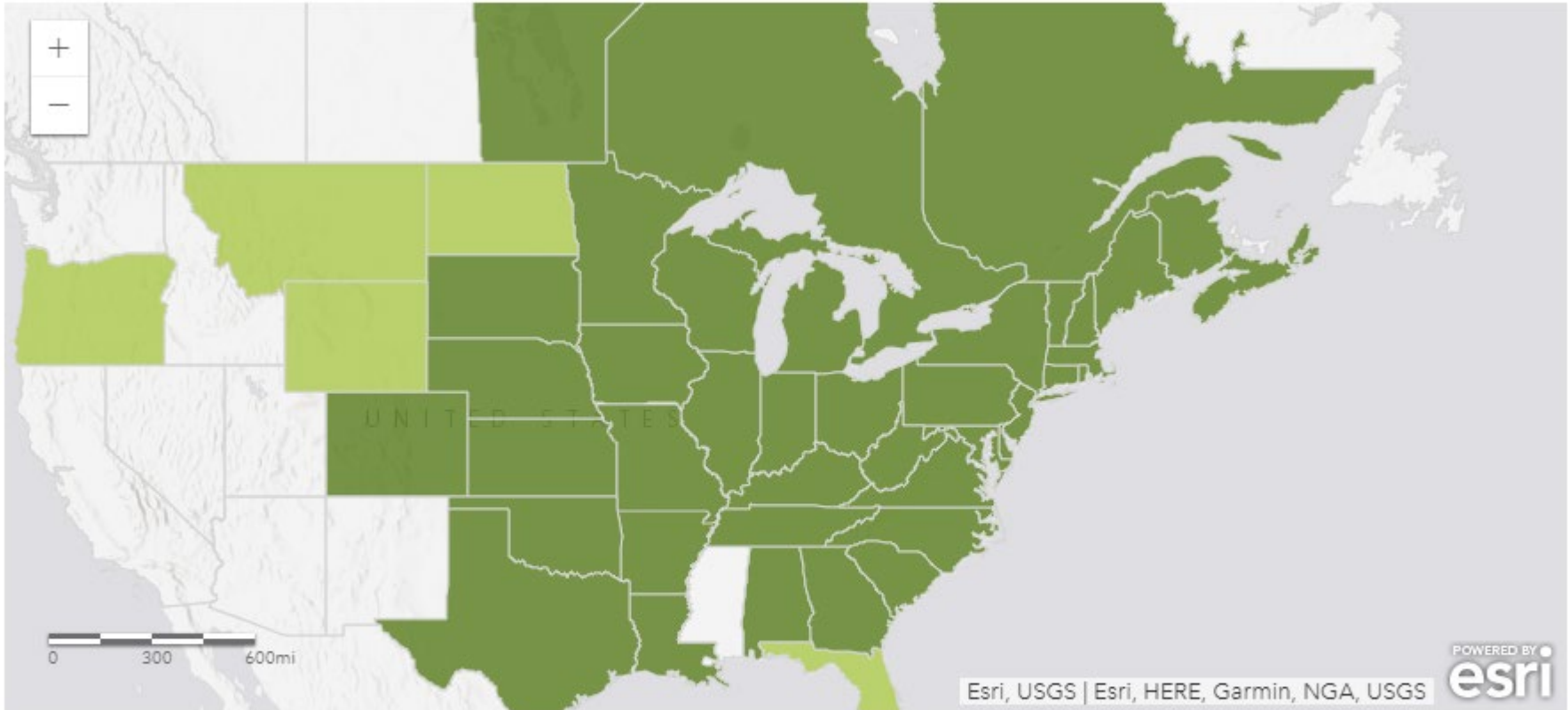


# MEET THE EMERALD ASH BORER (EAB)

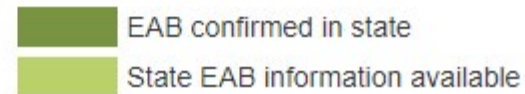


# EAB SCOPE AND SPREAD

- EAB is currently found in 35 states and 5 Canadian provinces



Select a state for local information



Map from [www.emeraldashborer.info](http://www.emeraldashborer.info)

# EAB IN MN



- Anoka
- Chisago
- Dakota
- Dodge
- Fillmore
- Goodhue
- Hennepin
- Houston
- Martin
- Olmsted
- Ramsey
- St. Louis
- Scott
- Wabasha
- Washington
- Winona
- Wright

EAB is found currently in 17 counties in MN

Map from [www.emeraldashborer.info](http://www.emeraldashborer.info)

# DETECTION

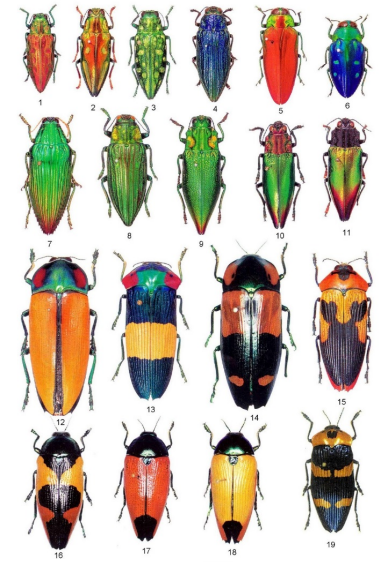


# MEET THE SMOKY WINGED BEETLE BANDIT (*CERCERIS FUMIPENNIS*)



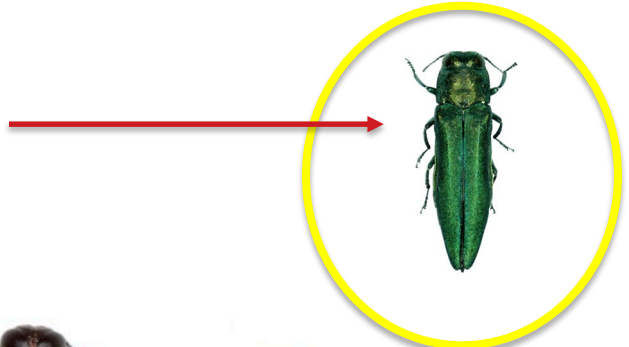
# NATIVE BEETLE HUNTER

- Family: Buprestidae
- Jewel Beetles or Metallic Wood Boring Beetles



Stings only  
beetles—not people!

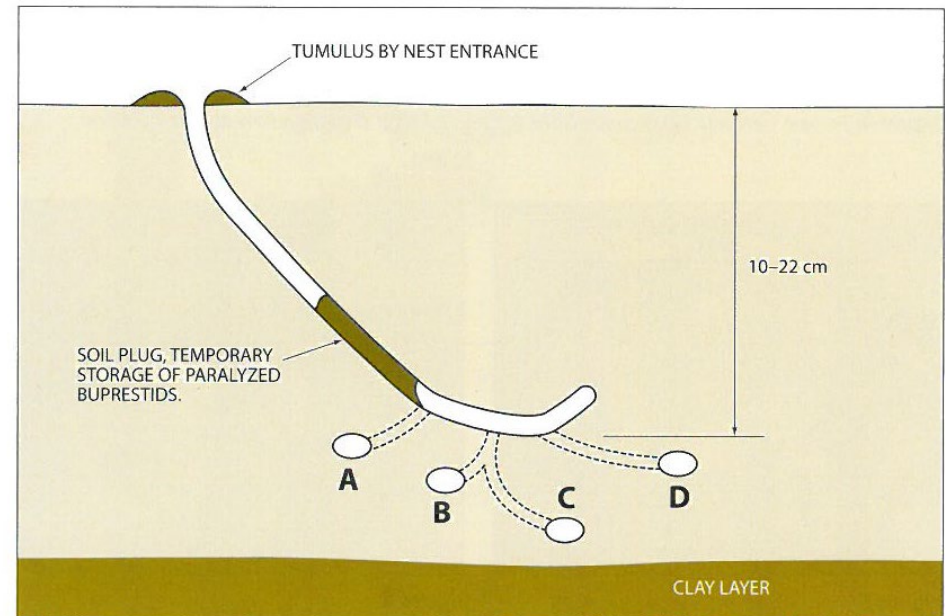
EAB



NATIVE BUPRESTID  
BEETLES



# HARMLESS GROUND-NESTERS



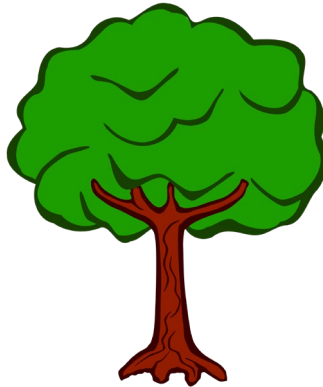
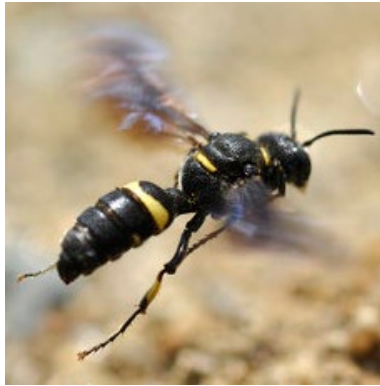
**Figure 8.** Diagram of a *Cerckeris fumipennis* nest. A, B, C and D indicate the location of completed cells; dotted lines indicate the sections of the main burrow that were backfilled upon the completion of each cell.



# COMPACTED, SANDY SOIL—BALLFIELDS?!



# BIOSURVEILLANCE



Using one species to detect another



Brood Cell

# MEET THE CITIZEN SCIENTISTS



GET  
INVOLVED!

# VOLUNTEERS HAVE TWO ROLES

- Scouts: Finding Beetle Bandit wasp nesting sites.



**JUNE 2016**

SUNDAY	MONDAY	TUESDAY	WEDNESDAY	THURSDAY	FRIDAY	SATURDAY
			1	2	3	4
5	6	7	8	9	10	11
12	13	14	15	16	17	18
19	20	21	22	23	24	25
26	27	28	29	30		

Calendar from www.calendars24.com

10:00

—

4:00

# SEARCHING FOR BEETLE BANDIT WASPS

10:00 – 4:00



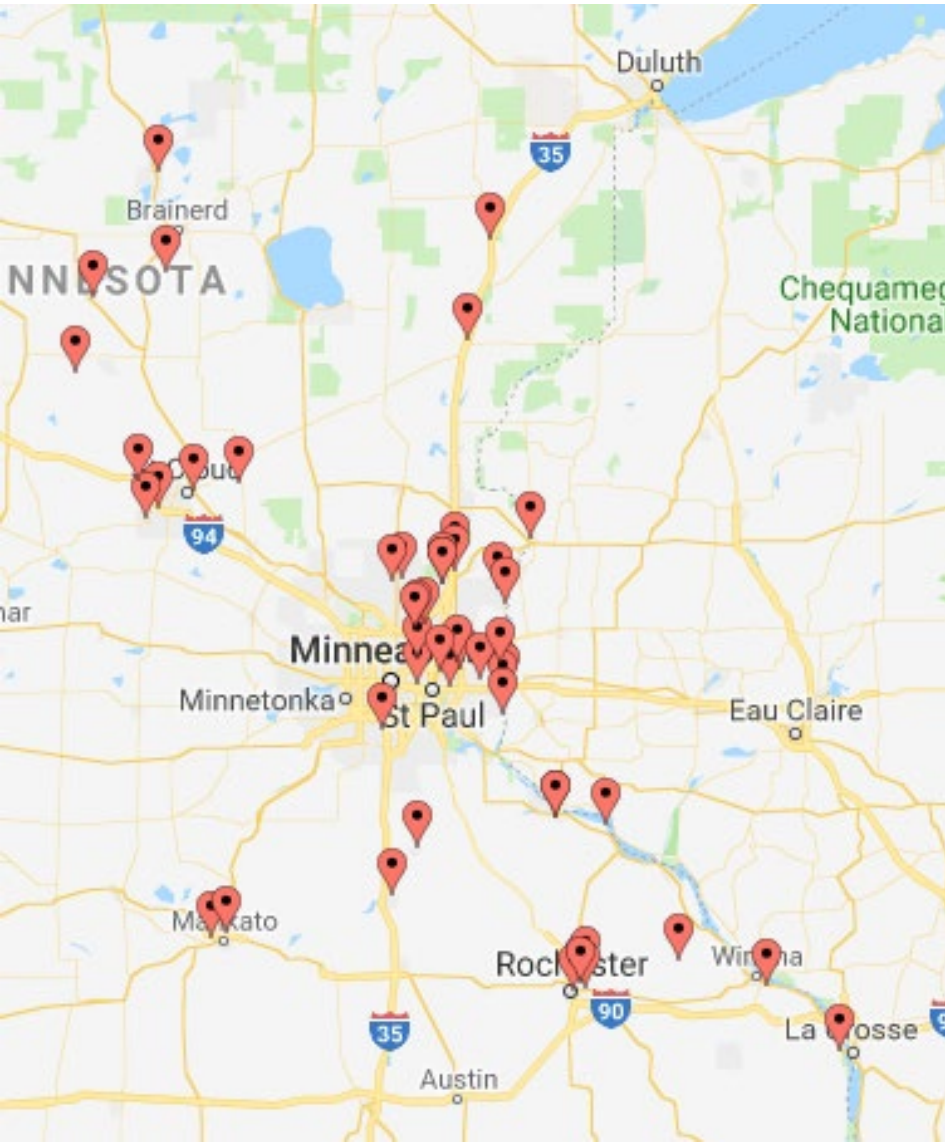
# MONITORING A WASP NESTING SITE



# MONITORING A SITE



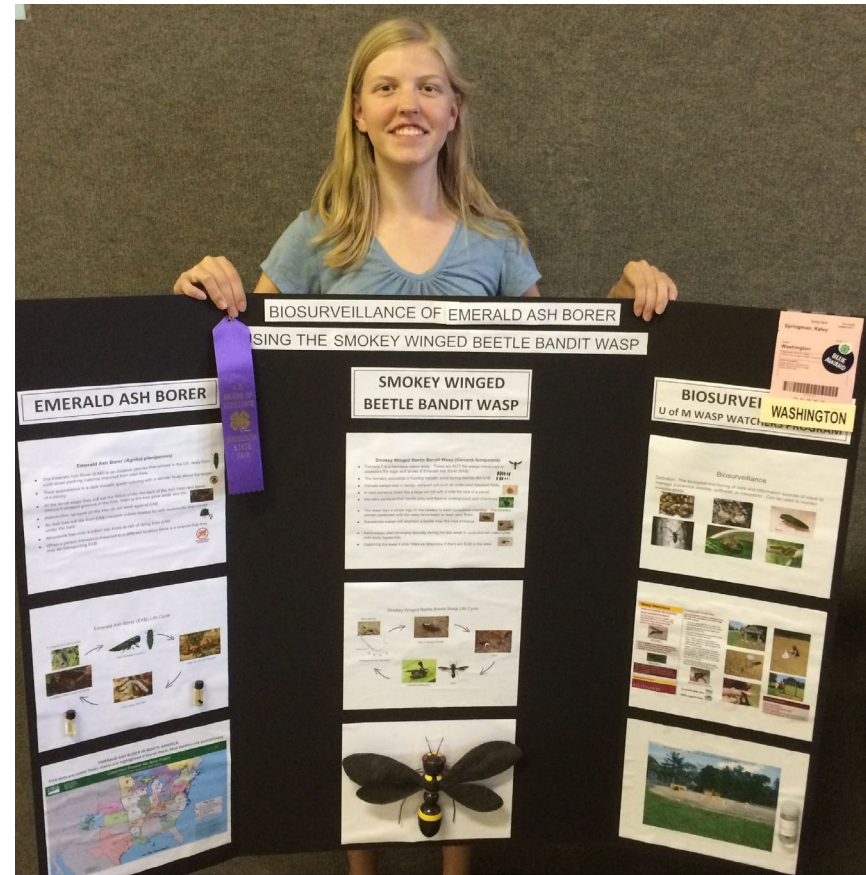
# 2018 BIOSURVEILLANCE SITES







# MEANINGFUL SCIENTIFIC EXPERIENCES



# GOOD FIT FOR CITIZEN SCIENCE





UNIVERSITY OF MINNESOTA | EXTENSION  
Driven to Discover<sup>SM</sup>

<http://waspwatchers.umn.edu>

Jennifer Schultz

My email: [schultzj@umn.edu](mailto:schultzj@umn.edu)

My office #: 612-301-8310



THANK YOU!



ENVIRONMENT  
AND NATURAL RESOURCES  
TRUST FUND



DEPARTMENT OF  
AGRICULTURE

© 2014 Regents of the University of Minnesota. All rights reserved.

The University of Minnesota is an equal opportunity educator and employer. In accordance with the Americans with Disabilities Act, this PowerPoint is available in alternative formats upon request. Direct requests to 612-624-1222.